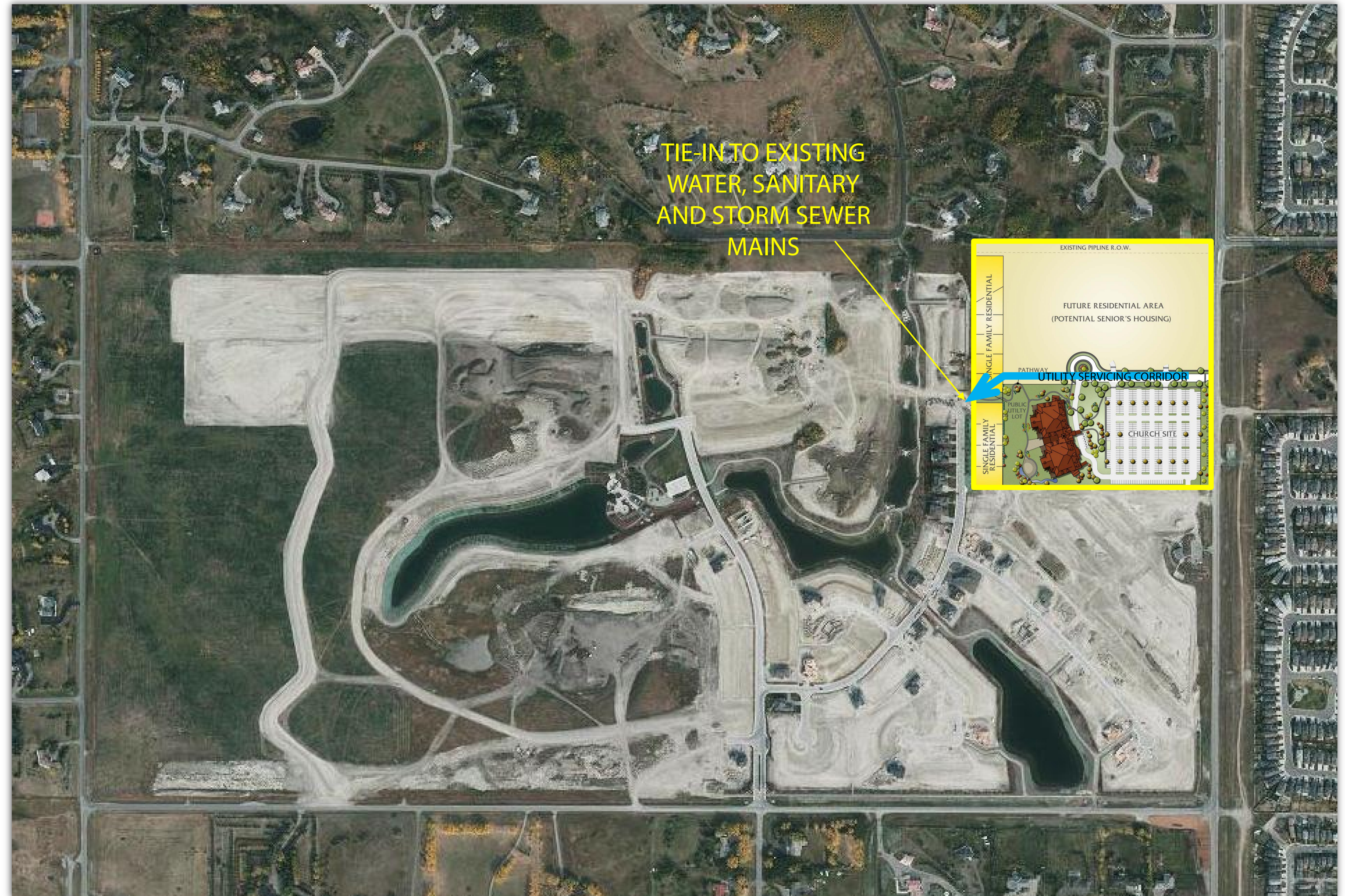


Utility Servicing

- Fully-serviced development.
- Infrastructure Design Brief *(already completed)*.
- Potable Water, Sanitary & Storm Sewer *(integrated with existing services within Watermark neighborhood)*.



FROM THE
Dankars

Transportation

- Access from 12 Mile Coulee Rd via new public road (to be constructed).
- Traffic Impact Assessment (already completed).
- No additional road improvements required
 - Surrounding roadways have capacity to accommodate traffic generated by this project.



FROM THE
Dankars